

www.editta-braun.com

contact Editta Braun: ebcie@editta-braun.com +43 676 639 50 89

contact management: antje.papke@editta-braun.com +49 157 33 66 34 54



UNDERDOGS

Technical Rider

senior chef technical director **Thomas Hinterberger**: kult-ex@gmx.at +43660 1470039

technical director **Dave Enhuber**: daveenhuber@gmail.com +43664 5223895

full-length video: <https://vimeo.com/952870752>

ESSENTIAL

Curtains:

Black, flat (!) back drop + and flat black sides (=black box)

Audience: sitting frontal with a good view to the floor, well rising public gallery, min. 20 cm step height. This is important especially for act 3 (scenes with white oat flakes and pink light)

Sound: good, powerful PA + 2 extra monitors for the dancers

IDEAL SCHEDULE (the day of the performance)

9-13	focussing lights
13-14	sound-check
14-16	light-rehearsal with performers
16-17	warm up performers
17-18	easy run of the whole piece
18-19.30	corrections; break for the performers
20.00	performance
21.30	strike down stage set, packing
22.00	leaving & dinner

LIGHT

See the attached lighting plot for details, which is the maximum variant for a very large stage, such as the Szene Salzburg, and can of course be adapted and reduced accordingly for smaller stages.

SO: If you have difficulties please contact us, we can adapt our lighting plot to your theater.

NOTE: We run our show from a laptop, **so we need DMX 512.**

SOUND

Powerful main system L/R front of stage – full range active speakers with subwoofers.

If possible: Speakers for the audience should be at the back of the stage (not in front).

Or: additional 2 monitors for the dancers, with 4 separate amplifiers. They will be

placed at the corner of the stage.

We bring our own laptop (Macbook Pro) and this needs to be connected to the PA.

STAGE

Ideal circumstances, contact us if you have difficulties:

Stage size ideal 10m x 10m x 4m high; bigger is no problem, if smaller please contact us

FLOOR

Sprung, wooden, smooth. Must be covered with a black dance floor, to be provided by the organiser and laid before the arrival of the company.

If you have difficulties, let us know - eventually we can adapt.

CURTAINS

Ideal would be a black box (flat black curtains - flat backdrop, flat sidedrops, no wings)

SOUND

Powerful main system L/R front of stage – full range active speakers with subwoofers.

If possible: Speakers for the audience should be at the back of the stage (not in front).

Or: additional 2 monitors for the dancers, with 4 separate amplifiers. They will be placed at the corner of the stage.

We bring our own laptop (Macbook Pro) and this needs to be connected to the PA.

STAGE ACCESSORIES brought by editta braun company

MacBook Pro + our own light console – max. 4 DMX Universes
1 Wheel Barrow, 1 big bag with foam cubes, 3 kilos of oat flakes,
artificial grass, costumes = 5 bulky items

TECHNICAL PERSONNEL

For setting up we need to start at 9 a.m. of the day of the performance and would need to continue then the whole day until the performance. 1 light technician, 1 sound technician.

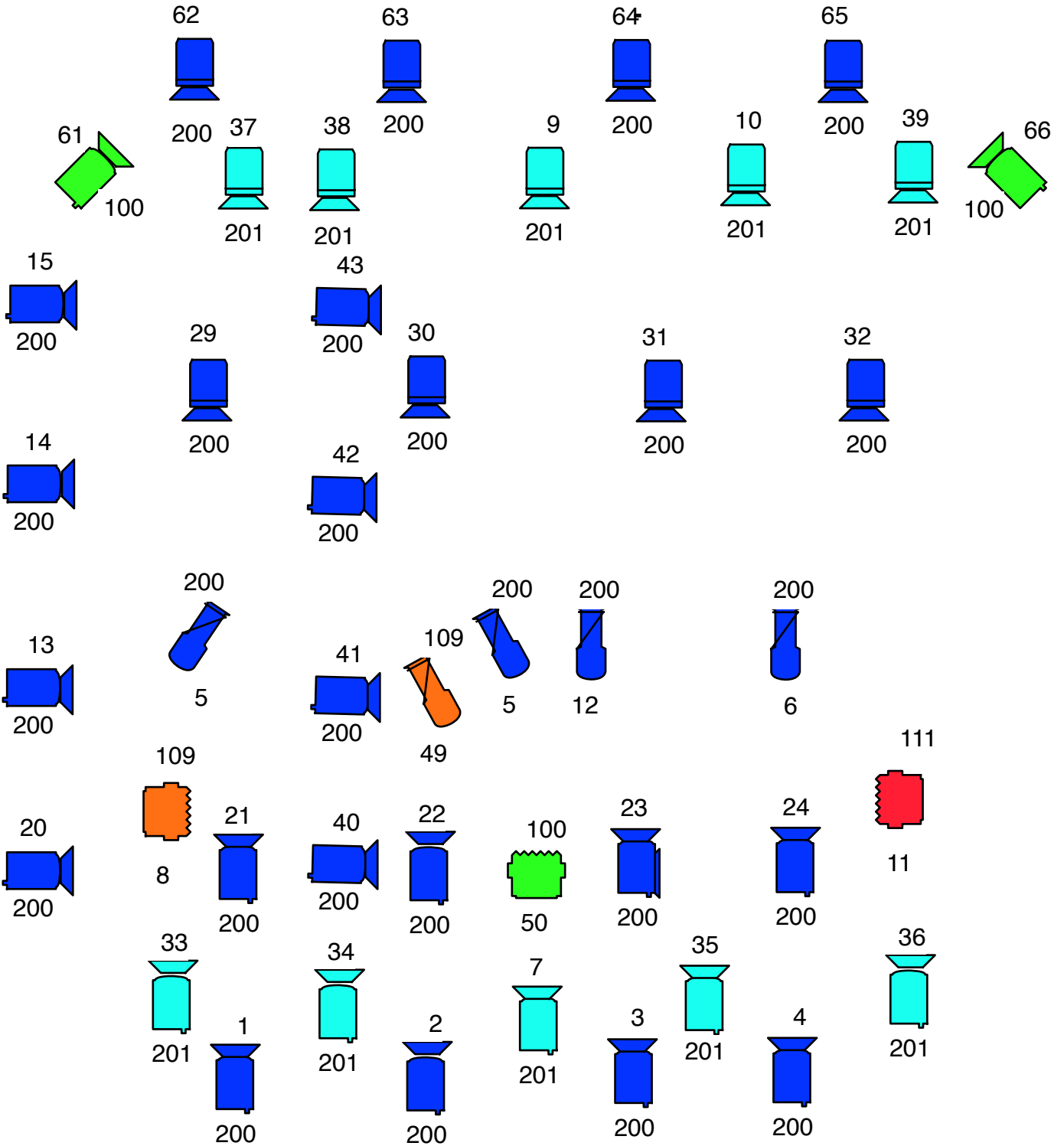
REQUESTED INFORMATIONS IF POSSIBLE

- photos from the stage, the space for the audience
- Name, telephone and e-mail of the technical director. This person has to be present or reachable at every moment of the set-up, rehearsals, performances
- Technical rider of the theatre: plans scale 1/50
- Ground plan of the stage, loading dock, audience seating
- Electrical plans showing lighting positions, circuit positions and numbers, and permanently hung instruments. Inventory of sound and lighting instruments

CATERING

Sandwiches, water, cookies, fruits, coffee - for setting up and show.
6 bottles of beer after the performance.

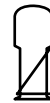
underdogs - editta braun company



flood



PC or F



Profile 30°



Barndoor