

www.editta-braun.com

contact Editta Braun: ebcie@editta-braun.com +43 676 639 50 89

contact management: antje.papke@editta-braun.com +49 157 33 66 34 54



Hydráos

TECHNICAL RIDER

technical director: Thomas Hinterberger

kult-ex@gmx.at

+43 660 1470039

full-length video: <https://vimeo.com/391085155>

password: Hydraos2020

ESSENTIAL

black and flat back drop, darkness and silence, audience frontal with a good view to the floor (either stage at 1.20 m or well rising public gallery, min. 30 cm step height), good PA.

IDEAL SCHEDULE (the day of the performance)

9-13	focussing lights
13-14	sound-check
14-16	light-rehearsal with performers
16-17	warm up performers
17-18	easy run of the whole piece
18-19.30	corrections; break for the performers
20.00	performance
21.30	strike down stage set, packing
22.00	leaving & dinner

LIGHT

See the attached lighting plot for details.

If you have difficulties please contact us, we can adapt our lighting plot to your theater.

To be confirmed after receiving a complete list of lighting inventory of the theatre, including a rig plan, venue distances and electrical plans showing lighting positions, circuit positions and numbers, and permanently hung instruments.

NOTE: We run our show from a laptop, so we need DMX 512.

STAGE

PERFORMING AREA (ideal circumstances):

Stage size ideal 8m wide x 8m deep x 4m high; bigger is no problem, if smaller please contact us,

FLOOR: Sprung, wooden, smooth. Must be covered with a black dance floor, to be provided by the organizer and laid before the arrival of the company.

CURTAINS: ideal would be a black box (flat black curtains (flat backdrop, flat sidedrops, no wings))

SOUND

P.A. - POWER AMPLIFIER

- Powerful main system L/R front of stage – full range active speakers with subwoofers. Power adapted to the venue.

MONITORS

If possible: Speakers for the audience should be at the back of the stage (not in front).

If not: additional 2 monitors for the dancers, with 4 separate amplifiers. They will be placed on the corner of the stage.

STAGE BOX

We bring our own laptop (Macbook Pro) and this needs to be connected to the PA - perhaps it needs a DI-Box.

STAGE ACCESSORIES brought by editta braun company

blue foam cubes

MacBook Pro

our own light-system (12 volt) for the floor-lamps

TECHNICAL PERSONNEL

For setting up we need to start at 9 a.m. of the day of the performance and would need to continue then the whole day until the performance.

1 light technician, 1 sound technician.

REQUESTED INFORMATION

- photos from the stage, the space for the audience
- Name, telephone and e-mail of the technical director. This person has to be present or reachable at every moment of the set-up, rehearsals, performances
- Technical rider of the theatre: plans scale 1/50
- Ground plan of the stage, loading dock, audience seating
- A cross-section showing stage, audience rake, height of ceiling, FOH electrics and grid
- Electrical plans showing lighting positions, circuit positions and numbers, and permanently hung instruments
- Inventory of sound and lighting instruments

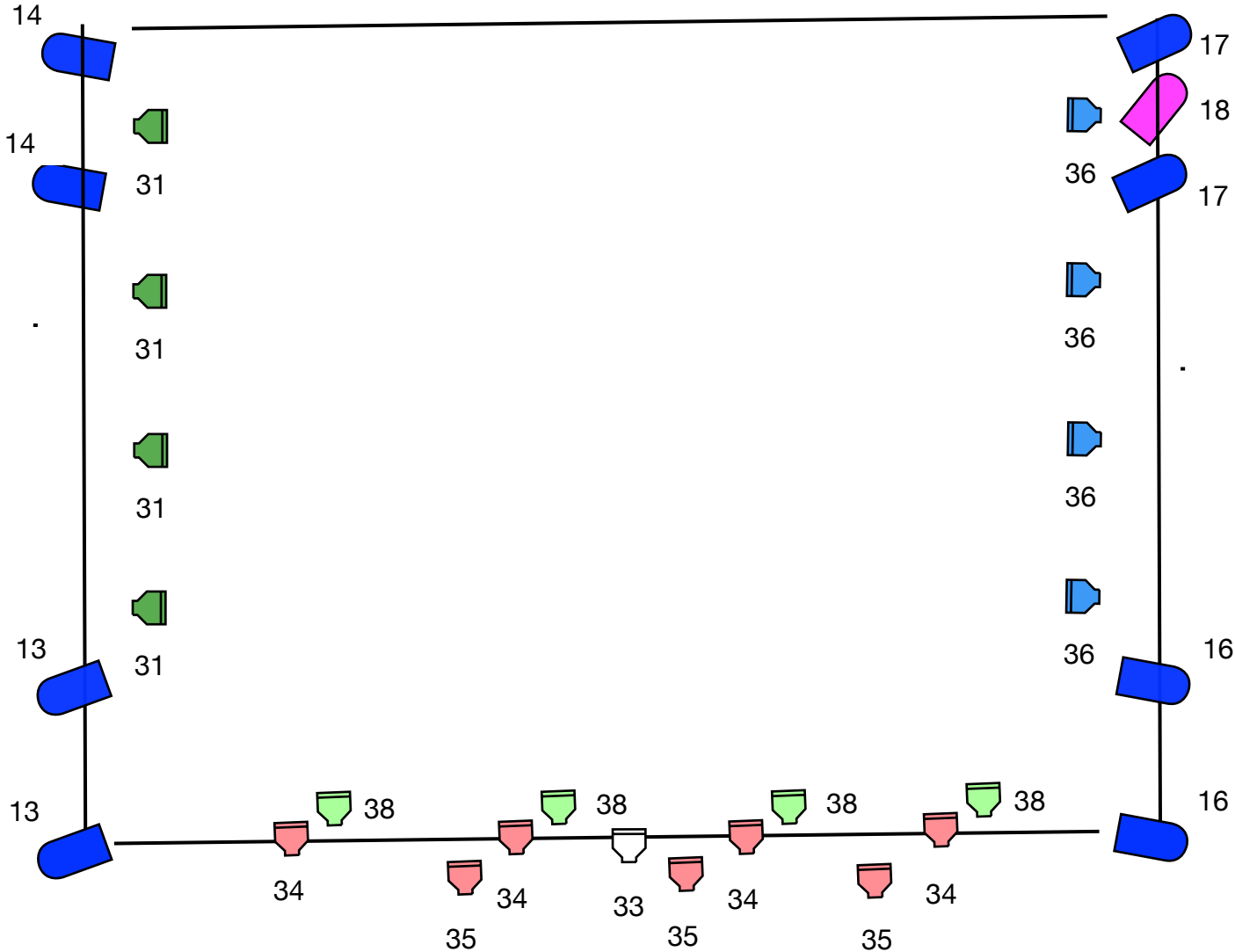
CATERING


Sandwiches (vegetarian, vegan), soft drinks (fruit juice, water), coffee for setting up and show.

Note: We will need an English or German speaking stage manager, light engineer and sound engineer or a full time translator next to our technical director during the entire working schedule.

Hydraos


EDITTA - BRAUN - COMPANY




 136 or 704


 200

 107

 243

 241

 ? 068 ?

 PAR CP62 or 61 (6m or higher)

 12V Lamps, we bring